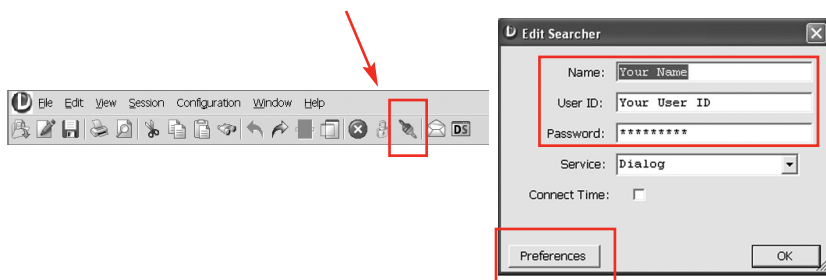


# Search Basics

## DialogLink 5

DialogLink 5 revolutionizes the way you work, combining speed and precision with powerful interfile linking, XML delivery, easy report formatting and more.

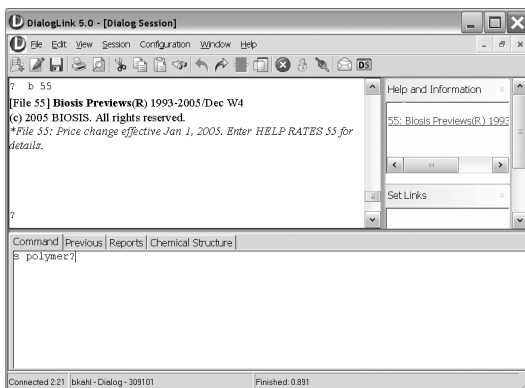
After downloading and installing the DialogLink 5 software, log on to Dialog or Dialog Secure by clicking the **Log On** button in the toolbar. Enter your name, User ID and password. You can also set your preferences at this time.



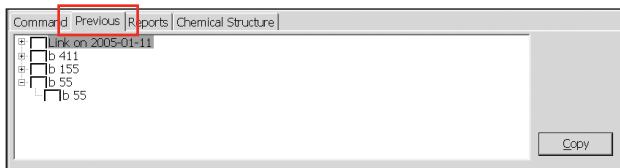
Once logged on, use the five basic features of the new interface for search, retrieval and manipulation of data.

1. The **Retrieve** buffer captures system responses and search results.

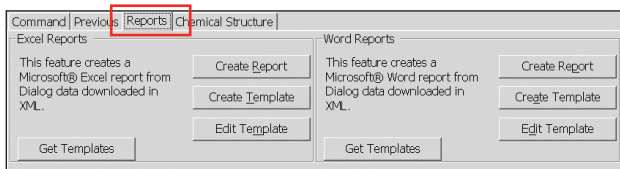
2. Enter search commands in the **Type-ahead** buffer located on the **Command** tab. You can also use the Load Script menu to run saved searches or copy and paste strategies from another document.



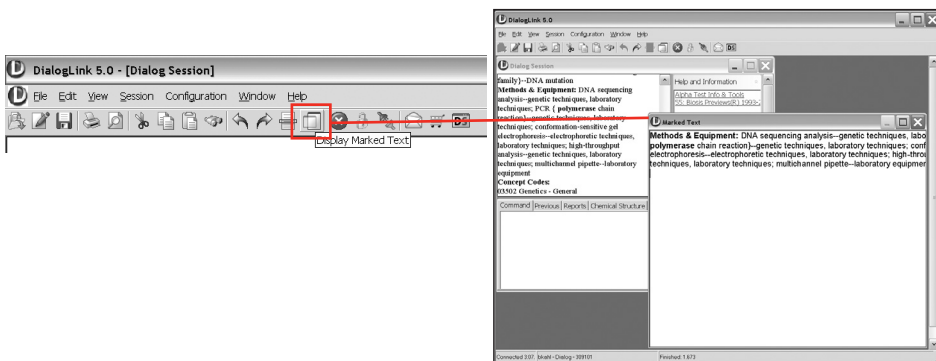
3. The **Previous** tab lets you view recent search commands and strategies.



4. The **Reports** tab provides options for post-processing of Dialog records downloaded in XML format.



5. Another useful post-processing tool is the Marked Text window, accessible by selecting the Marked Text icon in the toolbar. You can paste text from retrieved records into the Marked Text window and save them for use in other applications.



### Customer Service & Support

Within North America: 1 (800) 3 DIALOG (334 2564)

Outside North America: +00 800 33 34 2564

E-mail: [dialogcustomer@thomson.com](mailto:dialogcustomer@thomson.com)

Online Support: [support.dialog.com](http://support.dialog.com)