

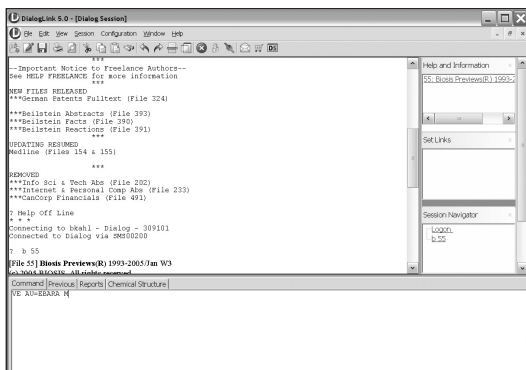
VISUAL EXPAND

DialogLink 5

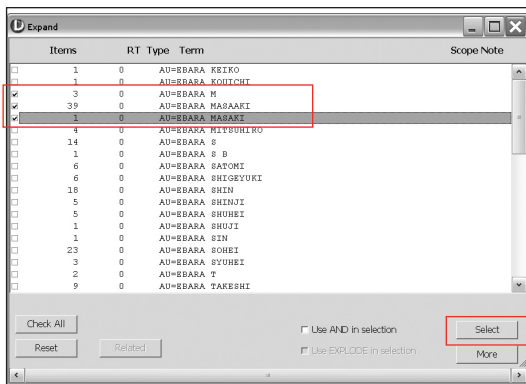
VISUAL EXPAND (VE) is used in addition to the classic EXPAND command for viewing indexed terms in Dialog databases, presenting you with a pop-up window from which terms can be selected. Use VISUAL EXPAND to:

- Verify spellings of company, author or journal names
- View what terms are used in a specific database index, such as document types, status designations, event names, industry names, etc.
- Save time by selecting search terms from a point-and-click index display, rather than typing individual dates, subject headings, authors, etc.

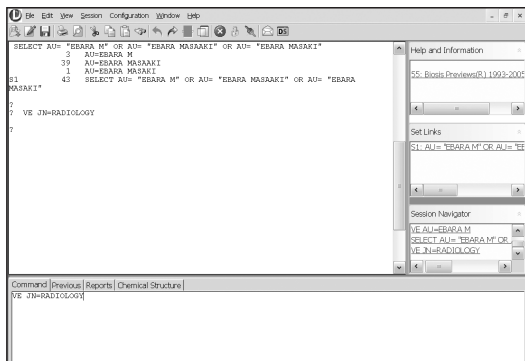
Start by BEGINning a database. In this example, begin BIOSIS® (File 55). Enter the VE command **VE AU=EBARA M** to search for the appropriate author.



The Expand window is displayed. Check the boxes for the items you want in your search and click the **Select** button. The items, which can range up to 2,000 characters, become your first search step.



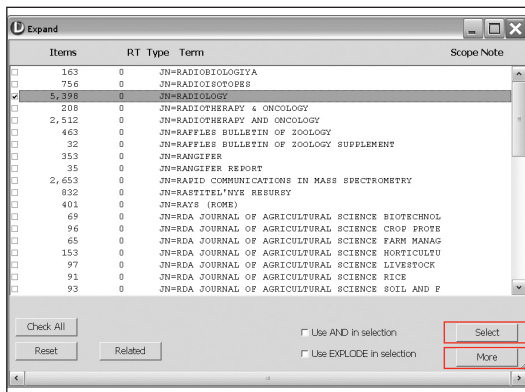
Next, enter the VE command
VE JN=RADIOLOGY to find the
 appropriate journal.



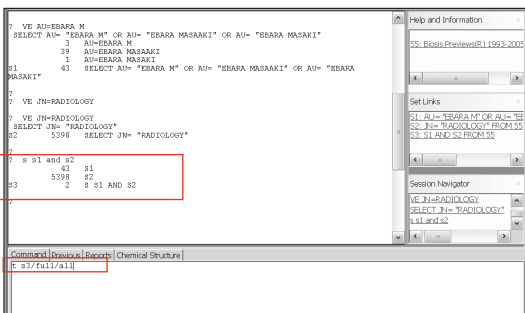
Check the JN=Radiology box in
 the VE window and click the
Select button. This becomes your
 second search step.

TIP

When the VISUAL EXPAND window opens,
 50 terms are displayed. Each time you click
 the **More** button, 50 more terms are added
 to the window, offering you more flexibility
 for displaying and reviewing indexed terms.



Combine search steps one and
 two to create your third search
 step. Enter the TYPE command
t s3/full/all to run the
 search.



Customer Service & Support

Within North America: 1 (800) 3 DIALOG (334 2564)
 Outside North America: +00 800 33 34 2564
 E-mail: dialogcustomer@thomson.com
 Online Support: support.dialog.com