

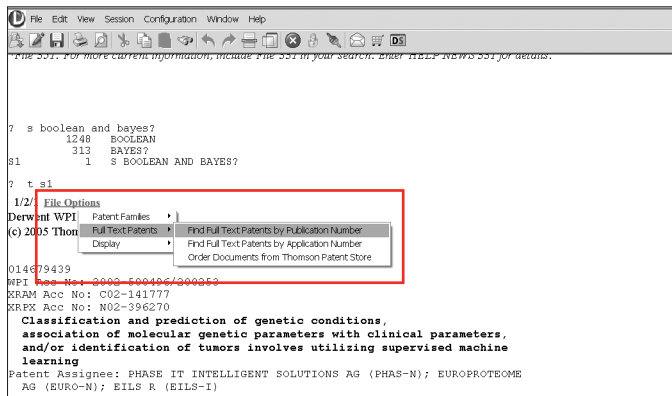
Search Options

DialogLink 5

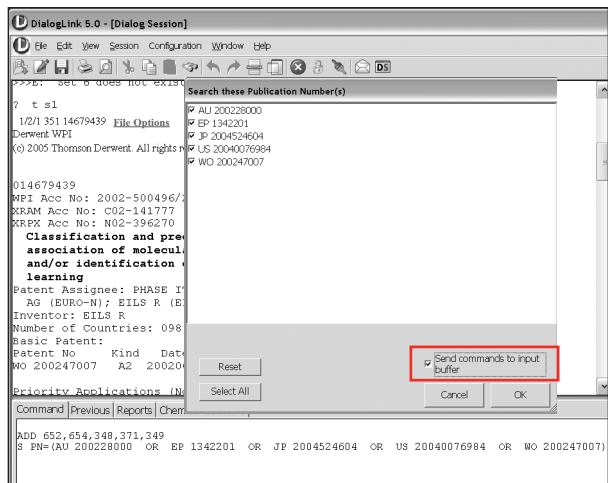
DialogLink 5 lets you access related research materials, for selected databases, directly from retrieved documents or from search sets built during a Dialog session. Selecting File Options directly in the search document makes it easy to extract specific elements (e.g. patent numbers) from a record, while options in the Set Options pane let you extract elements from an entire search set.

To Access File Options From a Document

1. Select "File Options" within the document, then Full Text Patents, then Find Full Text Patents by Publication Number.

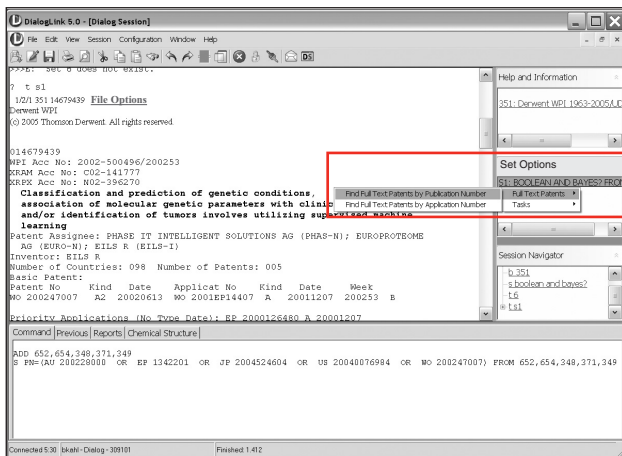


2. Select the publication you want to search. To begin searching immediately, click OK. To send the search to the Type Ahead buffer, providing an opportunity to evaluate the search, click the "Send commands to input buffer" check box.

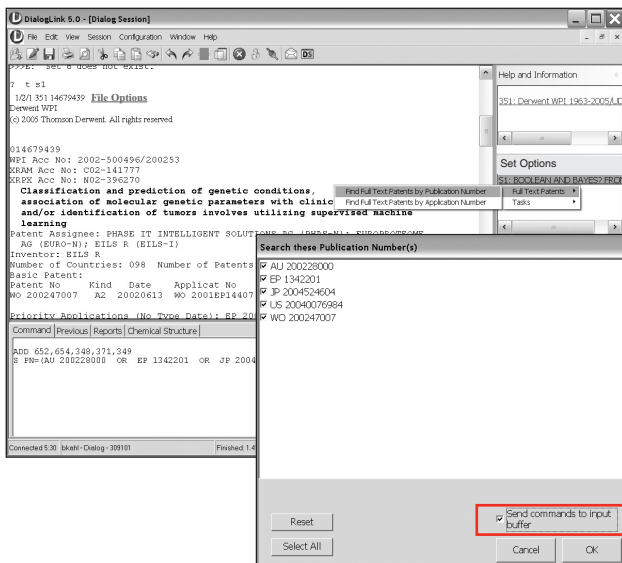


To Access Additional Search Options From the Set Options Pane

1. Select the search set in the Set Options pane, then Full Text Patents, then Find Full Text Patents by Publication Number.



2. Select the publications you want to search. To begin immediately, click OK. To send the search to the Type Ahead buffer instead, click the "Send commands to input buffer" check box.



Customer Service & Support

Within North America: 1 (800) 3 DIALOG (334 2564)

Outside North America: +00 800 33 34 2564

E-mail: dialogcustomer@thomson.com

Online Support: support.dialog.com